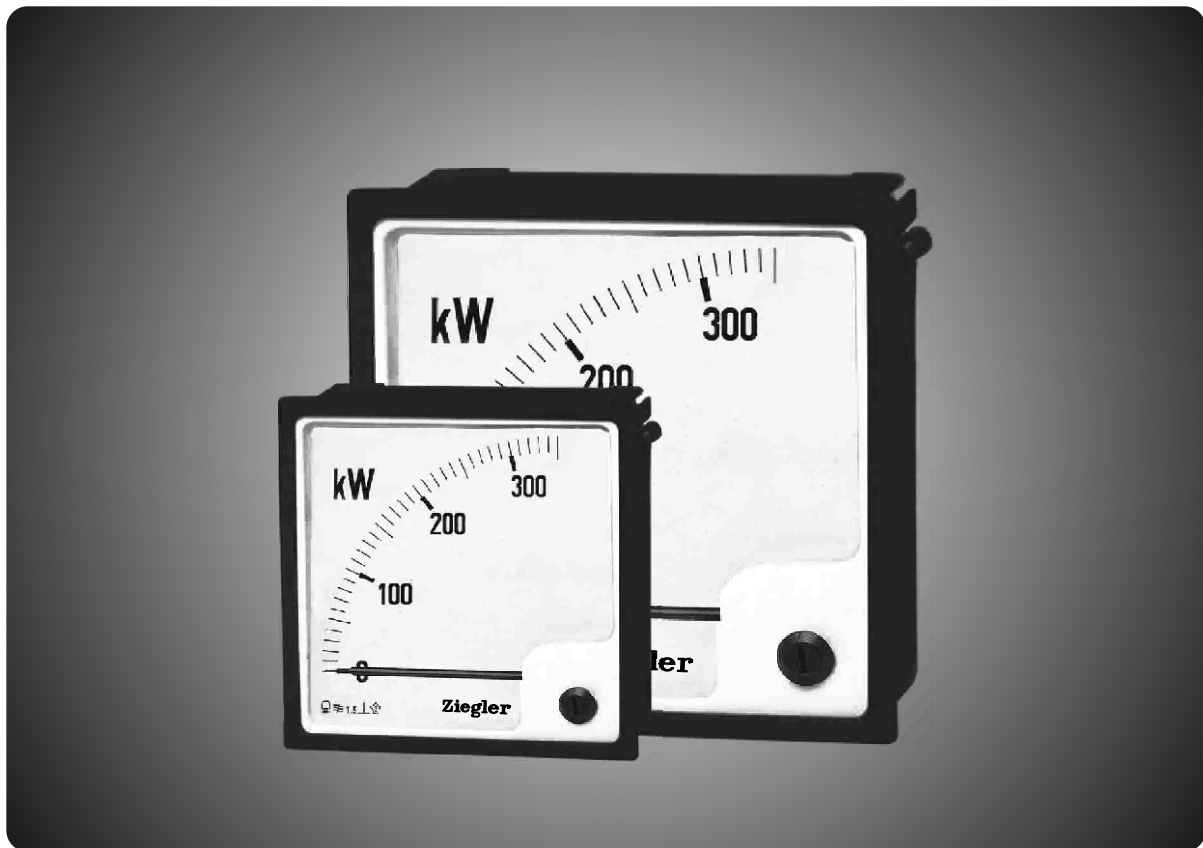


WQ 96

WQ 144

Data Sheet

Analogue
Watt and Var Meter



Application

The Watt and var meter models WQ 96/144 are offered for the following AC systems

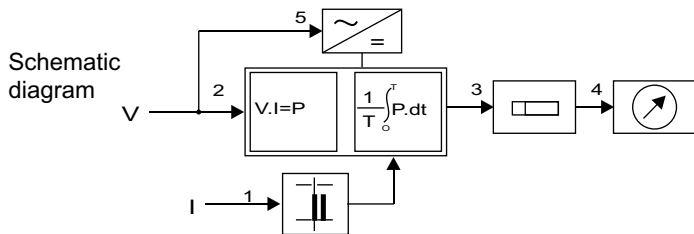
- Single phase
- 3 phase balanced load 3 or 4 wire
- 3 phase unbalanced load 3 or 4 wire

These instruments are suitable to indicate forward (export/outgoing) and reverse (import/incoming) power flow as well as inductive and capacitive reactive power. They can be used both on sinusoidal and non-sinusoidal current.

These meters offer several advantages in switchboards and Generating Set panels. Number of meters can be mounted in a single cutout (mosaic mounting). The Bezel, Front window glass and Dial can be easily replaced.

Functional Principle

For active and reactive power measurement, a moving coil indicator is used to indicate watts and vars for which an analogue DC signal is obtained from a power converter attached to the case of the indicator



The power converter uses one, two or three multiplier system 2 depending on the measurement of balanced or unbalanced load AC systems. Current transformers 1 provide the input current to the multiplier circuit.

The multipliers form the product of the instantaneous values of current and voltage (TDM principle). The product resultant is integrated thereby suppressing the AC ripple. Subsequently product proportional output is delivered to 3. There the voltage is converted into current, whose magnitude also depends on feasibility factor (I).

Finally this current is fed to the moving coil movement 4. For the instrument DC power supply is obtained from input voltage 5.

Mechanical Data

Case details	moulded square case suitable for mounting in control / switchgear panels, machinery consoles.
Case material	Glass filled polycarbonate Flame retardant and drip proof as per UL 94 V-O
Front facia	Glass
Colour of bezel	Black
Position of use	Vertical
Panel fixing	Swivel screw
Mounting	Stackable in a single cutout
Panel thickness	≤ 40 mm
Terminals	Hexagon studs, M4 screws and Wire clamps E3

Scale and pointer

Pointer	Knife-edge pointer	
Pointer deflection	0 90°	
Scale characteristics	Linear	
Scale division	Coarse-fine	
Scale length	WQ 96 97 mm	WQ 144 146 mm

Electrical Data

Measured quantity	Active or reactive power
Response time	4s max.
Overload capacity	Acc. to IEC 51 / DIN 60051
Continuously	1.2 times rated voltage / current
Short duration	2 times rated voltage, 5 sec max 10 times rated current, 5 sec max

Power consumption (approx.)

Current path	≤ 0.2 VA
Voltage path types	
E1W, D1W, D1B	≤ 3.0 VA
V1W, V1B	≤ 3.0 VA
E1B	≤ 3.5 VA
D2W, D2B	≤ 3.4 VA
V3W	≤ 3.9 VA
V3B	≤ 4.3 VA
Enclosures code	IP 52 case
(IEC 529)	IP 00 for terminals
Insulation class	Group A according to VDE 010
Rated Insulation voltage	660 V
Proof voltage testing	2 kV
Installation category	300 VCAT III (IEC 1010)
Insulation resistance	> 50 Mohm at 500 V d.c.

Standard Measuring Ranges

type	Active Power	Reactive Power
Single phase system	E1W	E1B
3 phase 3 wire sys. balanced load	D1W	D1B
3 phase 4 wire sys. balanced load	V1W	V1B
3 phase 3 wire sys. unbalanced load	D2W	D2B
3 phase 4 wire sys. unbalanced load	V3W	V3B

Selection of measuring range

Apparent power P_s is calculated from primary rating of current transformer and voltage transformer.

In a single phase network, $p_s = V \cdot I$

Where V = voltage between phase and neutral & I = line current

In a three phase network, $p_s = \sqrt{3} \cdot V \cdot I$

Where V = voltage between two phase & I = line current

Full scale value i.e. range of the instrument (P_w = active power, P_b = reactive power) must be selected in such a way that the same remain between 0.5 times and 1.2 times the value of apparent power P_s .

Thus feasibility factor "Lambda" should be between 0.5 & 1.2 where "Lambda" = P_w/P_s or P_b/P_s

Full scale values shall preferably be selected from standard series according to DIN 43701, 1-1.2-1.5-2-2.5-3-4-5-6-7.5-8 and their decadic / decimal multiples.

Rated voltage

For single phase (E1W, E1B): 57, 7, 63, 5, 100, 110, 127, 220, 289, 380.
For three phase (D1W, D1B, D2W, D2B, V1W, V1B, V3W, V3B): 100, 110, 220, 240, 380, 415, 440, 500.

The voltage will be considered as a phase voltage (between phase and neutral) in case of single phase meters and as a line voltage (between two phases) in case of multiphase (2 wire, 3 wire & 4 wire) meters.

Rated current 1 A or 5 A

If used on current transformer, please state

Accuracy at Reference Conditions

Accuracy class	1.5 according to IEC 51/ DIN EN 60051
Reference conditions	
Ambient temperature	23°C ± 2°C
Position of use	Nominal position ± 1°
Input	Full-scale power value Pw or Pb
Feasibility factor	"Lambda" = Pw/Ps or Pb/Ps
Power factor	

Cos f = 1 + 0.01 for watt meters &
sin f = 1 + 0.01 for var meters

Voltage	Rated voltage + 2%
Frequency	45-65 Hz (50 Hz ± 0.1% for E1B)
current	20% to 120% of rated current
Others	IEC 51 / DIN EN 60051

Electrical and mechanical zero point in the meter are not necessarily identical. Zero adjustment should be done when only voltage is applied and current circuit not energised.

Nominal range of use

Ambient temperature	0 ... 50°C
Position of use	Nominal position ± 5°
External magnetic field	0.5 mT
Voltage	Rated voltage ± 15%
Power factor	Cos f = 1 to 0.5 (ind.) for active power sin f = 1 to 0.5 (ind.) for reactive power
frequency	45-65 Hz (50 Hz ± 1% for E1B)

Applicable standards

Nominal case & cutout dimensions for : DIN 43700
indicating Electrical instruments

Scales and pointer for electrical measuring : DIN 43802
instruments

Connections and Terminal markings for panel : DIN 43807
meters

Terminal bolts / leads : DIN 46200/46282

Clamp straps for connections : DIN 46282

Safety requirements and protective measures : DIN 40050 / 8-70
for Electrical indicating.
instruments and their accessories
VDE 0110 / 11-72
VDE 0410 / 10-76
IEC 529, IEC 1010

Performance specifications for direct acting
indicating analogue electrical measuring
instruments and their accessories : IEC 51/
DIN EN 60051
DIN 43701

Environmental conditions : VDE / VDI 3540

Front frames for indicating measuring : DIN 43718
instruments Principle dimensions

UL Combustibility class : UL 94 V-O

Technical conditions of delivery for electrical : DIN 43701
instruments

Mechanical strength(Free fall test,vibration : VDE 0411, part 1,
test) Sec.43/44,IEC 1010
IEC 51

Electro Magnetic Compatibility(EMC) compliance as per following
standards :

EN 50081-2, EN 50082-2, N 55011/CISPR 11,
EN 60555-2, IEC 555-2,
EN 61000-4-4 / IEC 1000-4-4,
EN 61000-4-2 / IEC 1000-4-2,
EN 61000-4-5 / IEC 1000-4-5, ENV 50140

Comply with following European directives : 86/336/EEC (EMC
directive), 73/23/EEC (low voltage directive) & amendment
93*68/EEC, for CE marking.

Data Sheet

Analogue Watt and var Meters

Environmental conditions

Climatic suitability	Climatic class 3 according to VDE/VDI 3540
Operating Temperature	-10 ... + 55°C
Storage Temperature	-25 ... + 65°C
Relative humidity	≤ 75% annual average, non-condensing
Shock resistance	15g, 11 ms
Vibration resistance	10-150-10 Hz / 0.15 mm 1.5 g at about 50 Hz

Options

Case

Front facia	Antiglare glass
Colour of bezel	Red, Yellow, Blue, White
Red index pointer	Front adjustable on site
Position of use	On request 0°... 180°

Dial

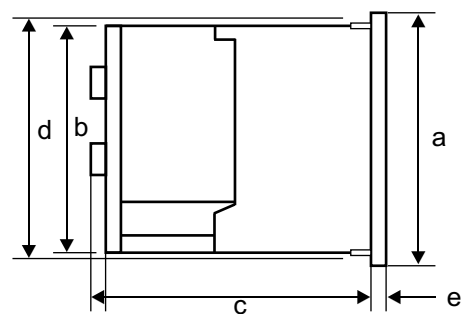
Blank dial	With initial and end values marked.
Special marking	Numbering / Lettering
Division dials	Basic divisions without numbering.
Colour marking/ bands	Red or Green

Accessories

Terminal protection against accidental contact

Protective rubber sleeves
Protection against accidental contact (hand and fingers)
acc. to VBG 4 / DIN 57 106, sec. 100

Dimensions

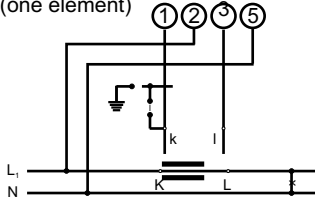


Dimensions (in mm)	WQ96	WQ144
Bezel a	□ 96	□ 144
Case b	□ 90	□ 136
Depth c	106	106 (E1W, E1B, D1W, D1B, V1W, V1B, D2W, D2B) 131 (V3W, V3B)
d	□ 91.5	□ 137.5
e	5.5	5.5
cutout	□ 92 ^{+0.8}	□ 138 ⁺¹
Weight (appr.)	0.65-0.90kg	0.9-1.1kg

Connections

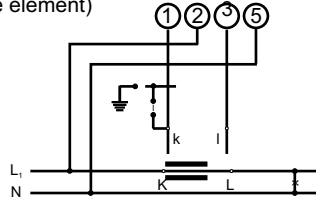
Active Power

E1W-single phase
(one element)

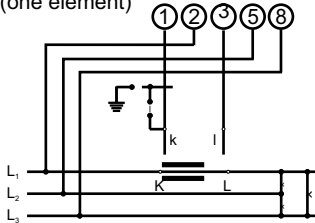


Reactive Power

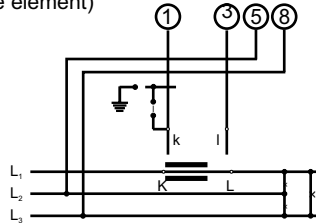
E1B-single phase
(one element)



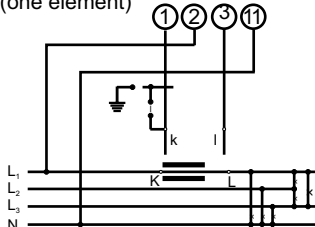
D1W-Three phase, three wire,
AC supply with balanced load
(one element)



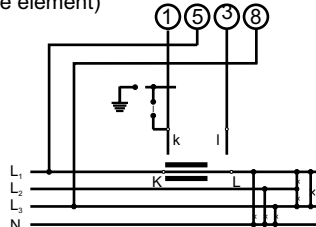
D1B-Three phase, three wire,
AC supply with balanced load
(one element)



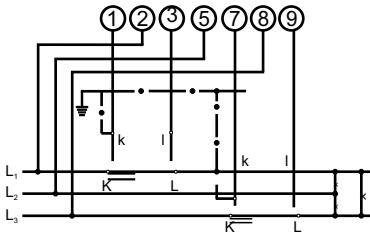
V1W-Three phase, four wire,
AC supply with balanced load
(one element)



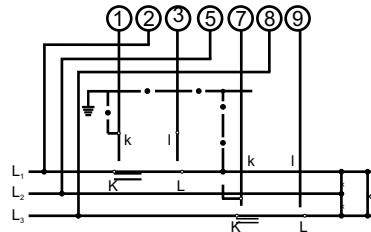
V1B-Three phase, four wire,
AC supply with balanced load
(one element)



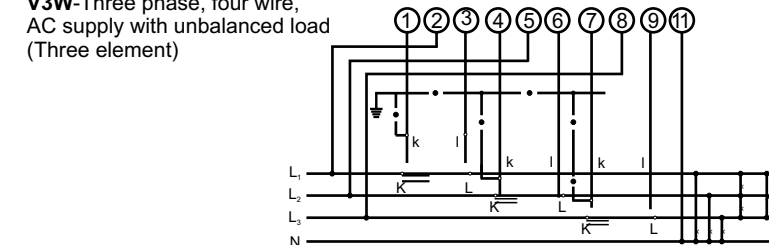
D2W-Three phase, three wire,
AC supply with unbalanced load
(Two element)



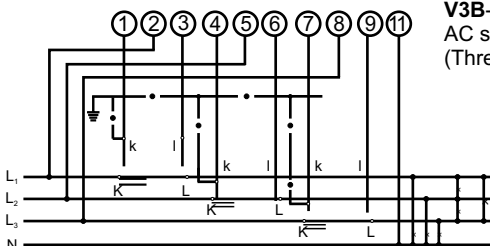
D2B-Three phase, three wire,
AC supply with unbalanced load
(Two element)



V3W-Three phase, four wire,
AC supply with unbalanced load
(Three element)



V3B-Three phase, four wire,
AC supply with unbalanced load
(Three element)



Ordering Information

Type WQ	Watt and var meter	
Front dimension 96 144	96 mm x 96 mm 144 mm x 144 mm	
Type	E1W, E1B D1W, D1B V1W, V1B D2W, D2B V3W, V3B	Single phase system 3 phase 3 wire system balance load 3 phase 4 wire system balance load 3 phase 3 wire system unbalance load 3 phase 4 wire system unbalance load
Measuring range	Specify while ordering	
Rated Voltages	Refer to table inside	
Rated currents	1 A 5 A	
Front facia	Normal glass ^{*1} antiglare glass ^{*3}	
Colour of Bezel	Black ^{*1} Red, Blue, Yellow, White ^{*3}	
Position of use	Vertical ^{*1} on request 0...180° ^{*3}	
Dial	Standard scale same as measuring range ^{*1} blank dial with divisions ^{*3} additional lettering on request ^{*3} additional numbering on request ^{*3} coloured marking Red or Green ^{*3} coloured sector Red or Green ^{*3}	
logo	Without ^{*3} OEM logo ^{*3}	

^{*1} standard

^{*3} please clearly add the desired specifications while ordering

Ordering example

WQ 96 D V3W for active power 3 phase 4 wire system unbalanced load,
measuring range 0...480 kW, voltage AC 440V, for use on current transformer 600/5A.

Safety precautions

- Instruments with damaged bezels or window glasses must be disconnected from the mains.
- Adequate safety clearance must be maintained to control panel fasteners and to sheet metal housing, if non-insulated connector wires are used.
- Scales should be replaced under voltage-free conditions.
- Bezels and window glasses should be replaced under voltage-free conditions.

Specifications are subject to change without notice (07/02)

D-92318, Neumarkt
Eberhard-Faber-Str.2
Nuernberg, Germany.
Tel. : 0049 9181 30483 / 42218
Fax : 0049 9181 30420
Mobile : 0171 961 7755
E-mail : info@ziegler-instruments.com

Ziegler